

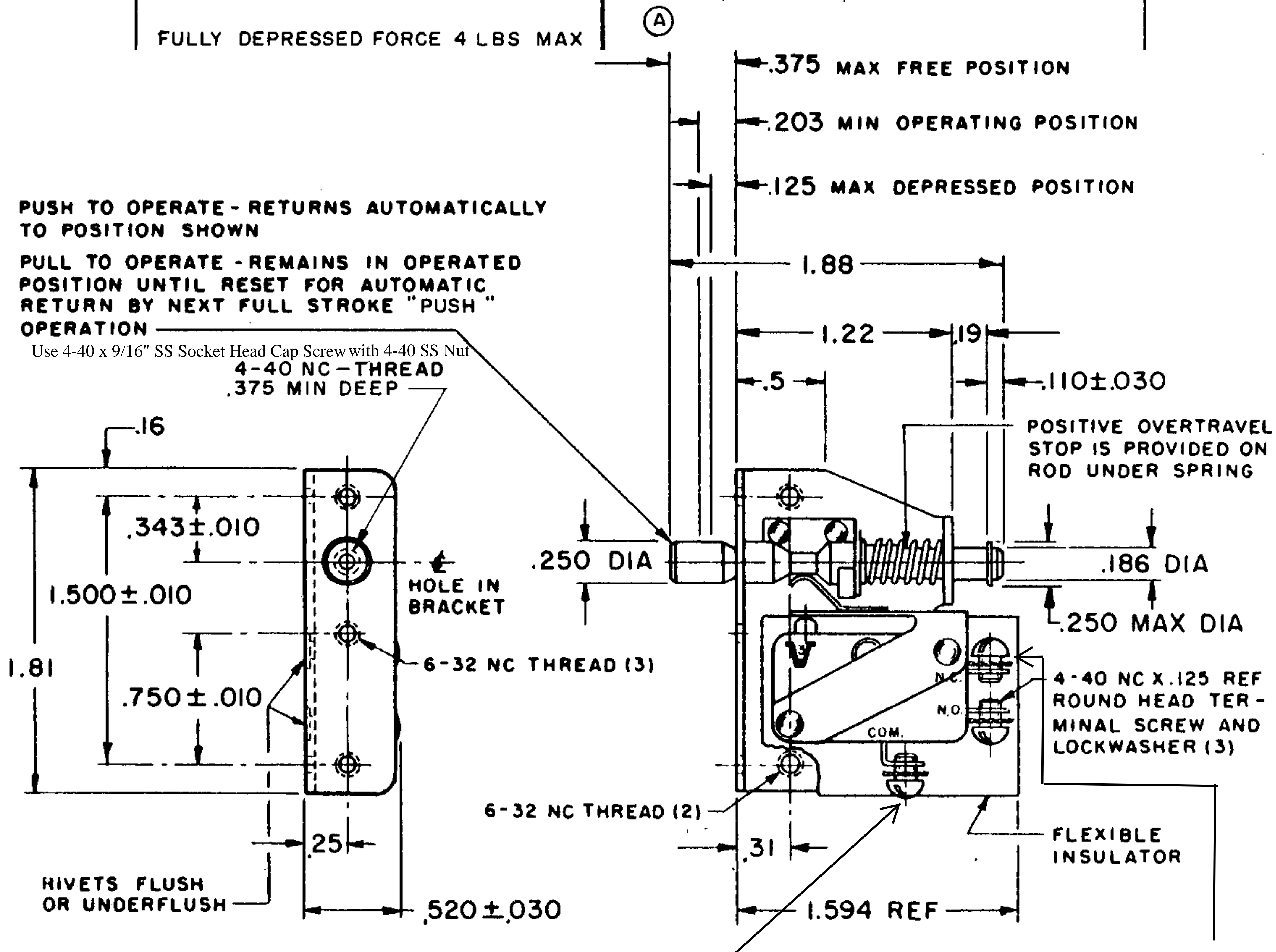
CHARACTERISTICS	ELECTRICAL DATA	
TOTAL TRAVEL .250 APPROX PUSH DIRECTION .187 APPROX PULL DIRECTION FULLY DEPRESSED FORCE 4 LBS MAX	CONTACT ARRANGEMENT S P D T	BREAK DISTANCE .040 APPROX
	15 A-1/3 HP-125 OR 250 VAC 1/2 A-125 VDC; 1/4 A-250 VDC	

PUSH TO OPERATE - RETURNS AUTOMATICALLY TO POSITION SHOWN

PULL TO OPERATE - REMAINS IN OPERATED POSITION UNTIL RESET FOR AUTOMATIC RETURN BY NEXT FULL STROKE "PUSH" OPERATION

Use 4-40 x 9/16" SS Socket Head Cap Screw with 4-40 SS Nut

**4-40 NC-THREAD
.375 MIN DEEP**



Continue the 22 gauge wire for Pin S or D on UP side of Flaps or Speed Brake(s) Switch on Stick Grip to Relay Deck Lug CM3A+.

22 gauge wire from Pin S or D on UP side of Flaps or Speed Brake(s) Switch on Stick Grip.

NOTE -

- 1-UNIT INCLUDES CATALOG LISTING V3-13 BASIC SWITCH (1)
- 2-NOTCH IN ACTUATOR ROD WILL PERMIT .035 DISPLACEMENT BETWEEN END OF ROD AND HOLE IN BRACKET
- 3-BASIC SWITCH PLASTIC PARTS ARE MADE OF MINERAL FILLED PHENOLICS
- 4-ACTUATOR ROD MADE OF HIGH STRENGTH PLASTIC